



## A NOTE FROM THE CO-PRESIDENTS

We are looking forward to another great summer season on beautiful Big Sand. The ice went out relatively early (April 7), daylight hours are longer, temperatures are warming up, docks are being installed, loons and snowbirds are returning. Can't wait!

Big Sand Lake Association (BSLA) Board Members and Chris and Ann Hilger, the new Charitable Fund co-chairs were busy during the off season working on projects beneficial for Big Sand. First, the BSLA Board approved requesting 1,100 hours of watercraft inspections for 2017. Then approved moving AIS donations from the BSLA Treasury to a special project fund within the Big Sand Charitable Fund held at Northwest MN Foundation to accommodate the flow of large amounts of money needed for AIS watercraft inspections.

The biggest accomplishment was successfully raising enough money and beyond to meet Hubbard County's March 1st deadline for the \$9,624 payment for Big Sand's AIS inspections in 2017. One fund raising letter from the Big Sand Lake Charitable Fund was mailed to residents in December 2016. A huge thank you goes out to the Board and the Hilgers. We are even more grateful to the 49 Big Sanders who responded so quickly and generously with donations totaling \$11,525. Not only was the March 1st deadline met, but the remaining \$1,900 will be available for 2018 watercraft inspections. AIS donations received in the remaining months of 2017 will be applied to the 2018 inspection program.

BSLA activity depends on your support through membership dues, donations, and volunteers! Please take a few quick minutes — maybe even right now — to complete the enclosed BSLA membership form and return it and payment in the conveniently enclosed addressed envelope. Or if you prefer to renew/join with credit card or Paypal, go to [www.bigsandlake.org](http://www.bigsandlake.org). Please note that all AIS donations must be sent separately to NWMF or donated on line to that fund. When else will there be a better time to renew your membership or to become a BSLA member? And please consider volunteering!

As you may recall, we agreed to serve on the BSLA Board as co-presidents elect for 2015-2016 and as co-presidents for 2016-2017 when Rich Jacobson passed away before he could complete his term. So, as of the Annual Meeting on June 24th, we are retired! We have thoroughly enjoyed serving BSLA over the last years and working with all of the wonderful volunteers and Big Sand friends. We will be around for questions and support if needed but confidently turn over the reins to Irene Weis, president for 2017-2019 and the new and continuing BSLA board members. Carry on!

See you on the lake and at the Annual Meeting,

**Barb Kimer & Catharine Williamson**

## Big Sand Lake 2017 Calendar

### ANNUAL MEETING

June 24 - 9:00 AM at Evergreen Lodge

### FOURTH OF JULY PARADE

July 4 - 11:00 AM at Northeast end of the lake

### LADIES COFFEE/HAPPY HOUR

May 23, June 21, July 20, August 22

(Locations TBD)

### SOCIALS

June 17 - Hosted by Aaron Roseth Family

July and August dates/locations TBD

September 16 - Headwaters Golf Club

### IRON HORSE DINNERS IN NEVIS

Casual scheduled during the winter months

Contact Linda Van Bruggen, [freddie54mn@yahoo.com](mailto:freddie54mn@yahoo.com),  
for email notifications.

### BSLA BOARD MEETINGS

May 20 - 9:00 AM

May 27, June 10

July, August, September and October dates TBD

### DEADLINES FOR NEWSLETTER MATERIALS

SPRING ISSUE - April 1

FALL ISSUE - September 1

## **AIS WATERCRAFT INSPECTIONS ARE FINALIZED FOR 2017**

The BSLA Board of Directors voted to raise funds for an additional 704 hours of water craft inspection supplementing the 396 hours provided by the State of MN. This action brings the total number of inspection hours for Big Sand to 1,100 hours for the 2017 season.

Total cost for watercraft inspections for Big Sand this year is approximately \$20,000, including \$6,976 from the State of MN. BSLA paid \$13,024 for the 704 inspection hours to the Hubbard County AIS office which manages the watercraft inspection program. \$3,300 of that amount was covered by a grant BSLA applied for and received from the Lake Emma Healthy Lakes Partnership program. The remaining \$9,624 was paid through generous donations from 47 Big Sand residents to the Big Sand Charitable Lake Fund / AIS Watercraft Inspection Fund.

A DNR certified inspector will at the Big Sand access on weekends from fishing opener to Memorial Day. Beginning Memorial Day weekend to Labor Day an inspector will be on duty daily. In September and October, popular fishing times, the access will be covered on weekends. In addition, BSLA provided 38 extra hours of inspection on some high traffic weekends at the Lake Emma access which has direct flow into Big Sand. The schedule for most shifts is for 8 hours — either 7 a.m. - 3 p.m. or 11 a.m.-7 p.m. However, some 10 hour shifts have been arranged especially during the July 4th week. Thank you to Al Judson, Barb Kimer and Irene Weis who worked to determine the schedule with Bill DonCarlos, Hubbard County AIS coordinator.

# LIGHTING TIPS FROM THE 2017 MINNESOTA BOATING GUIDE: Be Safe ~ Be Seen ~ Be Responsible

- Docking lights and/or spotlights on boats should only be used near docks or shore - not on open water.

**Comment:** This tip is derived from another state's regulations, which clarifies that its regulation applies only to permanently mounted lights on boats and permits their use only when docking, and the boat is traveling at no-wake speed and is within 100 feet of approaching the dock, mooring buoy, or shoreline. On Big Sand, this applies more to pontoons which commonly have docking lights installed (controlled by a dedicated switch labeled "Docking"). If these lights are used after sunset, they "travel" along way across the water, affect the night vision of both the pontoon's captain and that of other boaters, and unnecessarily illuminate a still-distant shoreline.

**The tip should not,** and the regulation does not, restrict the sensible and sometimes necessary use of handheld spotlights on open water at night, such as trying to locate a navigation buoy or fishing marker.

- Check navigation light sockets and wiring for corrosion.

**Comment:** Common sense and helpful even on freshwater lakes, although modern LED navigation lights typically are integrated units with no user serviceable parts.

- Boats on waters subject to U.S. jurisdiction may also display navigation lights under current federal inland regulations.

**Comment:** The federal inland waters navigation rules do not apply to Big Sand, as no lake in Hubbard County has been determined by the Coast Guard to be a navigable water of the United States.

- LED lights must not impact navigation light visibility.

**Comment:** Though not applicable, the federal rules are instructive, whether the lights are LED or incandescent. They provide that during the sunset to sunrise hours when the required navigation lights (the red/green at the bow and the white all-around light at the stern) must be displayed, no other lights shall be displayed if they could be mistaken for navigation lights or could impair the visibility or distinctive character of navigation lights or interfere with keeping a proper look-out (i.e., night vision).



# BSLA is Looking for Volunteers — Is It Your Turn?

As the saying goes, “many hands make light work” or “there is strength in numbers.” If you have ever thought of sharing some of your time with the Big Sand Lake Association, there are plenty of opportunities waiting for you. A “Volunteer Form” is printed on the back of the enclosed membership form or go to the web-site, [www.bigsandlake.org/BSLAInformation/volunteer](http://www.bigsandlake.org/BSLAInformation/volunteer).

Volunteering with the lake association does have rewards. Perhaps the best is knowing that you are doing your part in helping to keep Big Sand a healthy, vibrant, and friendly place — not to mention getting to know others from around the lake who share enthusiasm for beautiful Big Sand.

Three volunteer positions described below are especially needed. For more information about these positions or other volunteer opportunities, please contact Catharine Williamson/[spirit@me.com](mailto:spirit@me.com) or Barb Kimer/[barbkimer@gmail.com](mailto:barbkimer@gmail.com).

- **Board Secretary:** Transcribe and deliver, via email, the minutes from BSLA board meeting (approximately 4-5 times per season). Having a secretary/recorder will allow all board members to concentrate on board discussions and decisions. The option would be for this volunteer to attend board meetings in person, or transcribe board proceedings from a recording of the meetings.
- **Website Coordinator:** Compose updates for the homepage on a regular basis; review and update current website content; communicate with Paul Shoemaker at Cloud Digital, technical web manager for BSLA. Position requires minimal technical knowledge and experience.
- **Neighborhood “Captains”:** Assist with updating the Big Sand Resident Directory — neighbors no longer living on the lake, contact new neighbors for inclusion in the directory. Serve as the ‘calling tree’ representative to more personally connect and share Big Sand information with folks living near you.

Thank you to all who are currently volunteering. Your efforts are truly appreciated. If you have not yet taken a turn at volunteering for Big Sand, now may be the time. Thank you for stepping up!

# STOP AIS SPREAD DURING FISHING TOURNAMENTS

## AN EFFECTIVE PROGRAM FROM CASS COUNTY AND MUSKIES, INC.

Minnesota Lakes and Rivers Advocates hosted an online Webinar discussing the program implemented by Cass County and Muskies, Inc. to lower the risk of AIS spread during the annual Frank J Schneider Muskie Tournament. The 2017 tournament takes place in early September and plays host to more than 500 fishermen spanning 20 lakes. The annual tourney is 40 years old and 'sports' a \$15,000 cash grand prize.

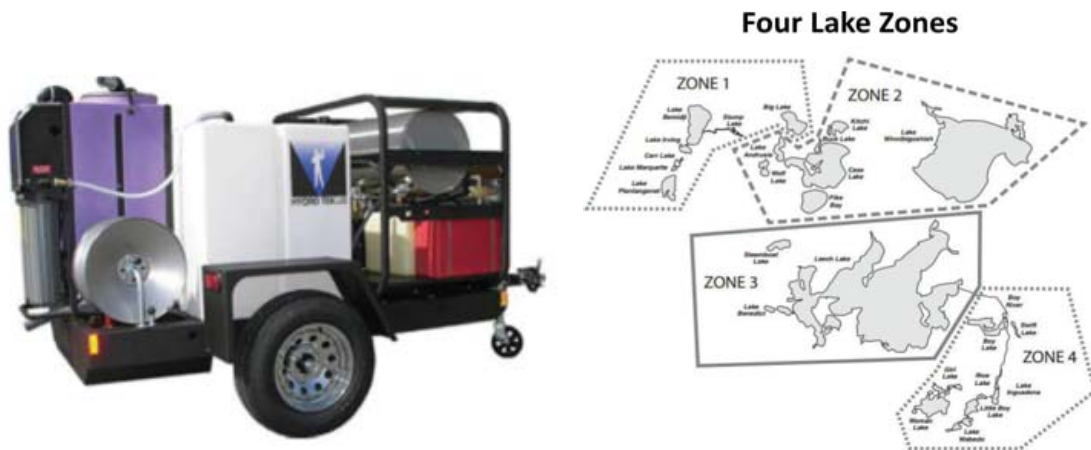
### You may access the webinar:

[https://www.anymeeting.com/WebConference/RecordingDefault.aspx?c\\_psrId=E955DC8689483C](https://www.anymeeting.com/WebConference/RecordingDefault.aspx?c_psrId=E955DC8689483C) .

### Highlights of the webinar:

Participants must have their boat inspected and be signed off.

Multiple stations for inspection and decontamination were set up around the 4 zones. Pictured is the portable decontamination station.



Participants may only compete in 1 Zone, they may not move between Zones. A colored button Id's the competitor's Zone. Before AIS was identified in the Cass County watershed, participants had been allowed to move between Zones. This has now been designated 'illegal' in the tourney. If a competitor is caught moving between Zones they are disqualified.

Participants must present their inspection card before receiving their tournament packet.

### AIS Inspection Card

TO BE COMPLETED BY TOURNAMENT PARTICIPANT	TO BE COMPLETED BY INSPECTION LOCATION
<small>CHECK ONE ONLY:</small> <input type="checkbox"/> The watercraft in which I will participate in this tournament has not left the body of water in which I will participate in the tournament in the 30 days prior to the tournament or any pre-fishing. <input type="checkbox"/> The watercraft in which I will participate in this tournament has been inspected by an official watercraft inspection station and has not been in any other water since. The inspector has completed the other portion of this card. <input type="checkbox"/> The watercraft in which I will participate in this tournament does not belong to me. The watercraft is owned by _____ Print Name _____ Tournament Number _____ SIGNATURE _____	<p>This boat will be participating in the Frank Schneider Muskie Tournament September 9-10-11, 2016. It is a requirement of this tournament that the boat be inspected for aquatic invasive species prior to entering any tournament waters. Thank you for taking the time today to help us do our best to make sure we will not be transporting any aquatic invasive species to the tournament waters.</p> <p>DATE OF INSPECTION <input type="checkbox"/> Thursday September 1 <input type="checkbox"/> Friday September 2 <input type="checkbox"/> Saturday September 3 <input type="checkbox"/> Sunday September 4 <input type="checkbox"/> Monday September 5 <input type="checkbox"/> Tuesday September 6 <input type="checkbox"/> Wednesday September 7 <input type="checkbox"/> Thursday September 8</p> <p>INSPECTION LOCATION (Lake / Ramp) <input type="checkbox"/> DNR <input type="checkbox"/> County <input type="checkbox"/> Other _____</p> <p>INSPECTOR SIGNATURE _____ <input type="checkbox"/> Boat passed inspection on date checked above <input type="checkbox"/> Boat must be decontaminated</p> <p><b>IF NECESSARY TO BE COMPLETED BY DECONTAMINATION STATION</b> <input type="checkbox"/> DNR <input type="checkbox"/> County <input type="checkbox"/> Other _____ INSPECTOR SIGNATURE _____ <input type="checkbox"/> Boat has been decontaminated Date _____</p>

Cass County and Muskie's Inc. partnered with multiple agencies to successfully implement this program.

There is work being done to possibly implement some type of system state wide to recognize inspection and decontamination of boats. Nothing specific was announced.

# Membership Dues

It is time to remind you to send in your annual Big Sand Lake Association dues of only \$40. Your support helps the BSLA preserve and protect the serenity, quality and natural beauty of Big Sand Lake. Thank you to those who have already renewed or joined for 2018. 2018 members are identified with a loon symbol in front of their names in the Resident Directory in the Member's Area found on at [www.bigsandlake.org](http://www.bigsandlake.org).

BSLA membership dues support the following activities:

- Extensive efforts to protect Big Sand Lake from the threat of invasive species, primarily zebra mussels, Eurasian Milfoil and Starry Stone Wart.
- Purchase, installation and maintenance of safety buoys
- Monitoring water quality
- Annual Meeting and Family Picnic
- Newsletters

Wanting to do more? You can make additional contributions to the BSLA treasury to support operational expenses such as website and webcams, member communications, educational and social events. Donations are also needed for the AIS watercraft inspections fund at the Big Sand Charitable Fund at Northwest MN Foundation. See bottom of mail-in form or you can find the link to NWMF on the website membership page. AIS contributions received during the remaining months of 2017 will be applied to the 2018 inspection program.

Please visit <http://www.bigsandlake.org/> - click on membership to renew or join with a credit card or PayPal. OR mail in the enclosed form and a check for dues and optional donation to the BSLA Treasury. A self addressed envelope is enclosed for your convenience. Note: Do not send AIS donations to BSLA. They must be mailed separately to the Charitable Lake Fund or donate at [www.bigsandlake.org](http://www.bigsandlake.org).

We encourage adult children of BSLA members and frequent visitors/friends to join and engage in supporting Big Sand Lake. Take advantage of the \$20 membership dues category for Adult Family Members and Friends of Big Sand Lake" (not available to property owners). Become a part of the BSLA mailing list and 'Be in the Know'!

Thank you for helping us to preserve Big Sand Lake for generations to come with your membership! Looking forward to seeing everyone at the Annual Meeting!

Please call/email with any questions about membership.  
Bonnie Brand [bjbrand@info-link.net](mailto:bjbrand@info-link.net) 320-491-6952  
Barb Kimer [barbkimer@gmail.com](mailto:barbkimer@gmail.com)  
Membership Coordinators





# FUNDING THE PROTECTION OF BIG SAND LAKE

Sadly, the number of lakes with Aquatic Invasive Species infestation in our region in Minnesota is growing, but the Big Sand Lake Association planned ahead for maximum watercraft inspection this season.

In order to fund an optimal 1100 hours of inspection at the boat launch in 2017, BSLA applied for grants from Lake Emma Township and the Minnesota DNR totaling \$10,726. They also anticipated needing an additional \$9,624 to fully fund the inspection, so the Big Sand Lake Charitable Fund advisors stepped in to help with fundraising and to recommend a foundation grant to make up the difference.

In December, a letter was sent to BSL homeowners as part of a new campaign to cover the shortfall, without having to dip into our Big Sand Lake Charitable Fund account. Not surprisingly, Big Sand Lakers were very generous in their response. Collectively, 49 homeowners donated \$11,525 since December, which completely covers this year's expenses and leaves us with a little seed money for next winter's campaign. Editor's Note: AIS contributions received during the remaining months of 2017 will be applied to the 2018 inspection program".

On behalf of all of us who love Big Sand Lake, we want to offer a huge THANK YOU to these donors:

Jonathan D. Allen	Steven J. Fuglestad	Butch & Ann McConn
Paul Askegaard	Deborah Goltz	Rolf & Karen Nelson
Edward & Rose Behling	Mark H. Gulbrandson	Nelson Cabin
Big Sand Lake Association	Bill & Kelly Hanley	Charles Patterson & Margaret Prah
Paul & Marilou Birkeland	Chris & Ann Hilger	Brian F. & Jane Ellen Peterson
Deborah Bowers	Tricia Hilger	Point House Association
Diana Brainard	Peter & Linda Hilger	Tom Scott
Bob & Adrienne Bray	Tim Hilger & Kathy Ebert	Richard & Carol Sederstrom
William J. & Connie L. Brock	Hilger Compound	Jeffery Shandorf
Bruggen Family	Don & Jeanne Hoodecheck	Carol & Pat Sokol
Salvado B. & Kathleen K. DaSilva	Michael J. Johnson	Robert & Laura Spolum
Tim & Linda Daugherty	Tom & Barbara Kimer	John & Susan Steffen
Bill & Vicki Eichten	Marcia Landgraf	James & Janis Stephenson
William & Carmelita Ellis	Ruth Larson	Marcia Undem
Marlene J. Fairchild	Mrs. William O. Lewis	Ken & Wilma Wilcox
Tim H. Fischbach	Michael & Marissa Marzlol	Stan & Catharine Williamson
Gene Fladeboe	Richard & Mimi Long	
	Candy Malm	

Let's keep Big Sand protected and beautiful as long as we can!

Big Sand Lake Charitable Fund Advisory Committee Members

Ann Hilger, Chris Hilger and Linda Lee

# THE EXPERIENCE WE GAIN FROM CLARITY IS THE CLARITY WE GAIN FROM EXPERIENCE

By Richard Sederstrom

The kindly Editor of The New Loon News has asked me to compose a piece on the changes to water clarity in Big Sand Lake over the years since we began to pay attention. The kindly Editor expects that I will comply with this request, and so I will. In my primitive fashion: Because the best study of water clarity isn't by way of charts and graphs and statistics. It is by way of experience. Here's an experience:

## Loonshine

After all, it is the nature of loons to swim  
even under boats sometimes  
but not under this one before, not ours,  
not until now  
nor wearing these clusters of silver  
pearls on her back, which shine, gleam,  
pure glow! beneath the lake surface:  
The silver of it!

The emerald of its dive.  
And not a glisten of it for me alone.  
This elemental lack is oxygen  
to my moment of joy.  
What did Francis declare to be perfect joy?  
My joy, likewise severe and likewise difficult  
and likewise nowise cursed by perfection,  
follows the deepening shine of the bird.

The first official Secchi disk readings were made in the mid-eighties. The graph (see Appendix) gives a mean reading of about 15 feet. As we paid attention to the evidence of the day, and to state laws as they eventually appeared, we washed much less nitrogen into the lake by way of fertilizer, and we moved our, uh, waste depository systems to a safe distance from the shore and sealed the systems (it's the law). Gradually, the clarity of the water improved:

## Cold and Bright, the View from Below

It is desert, the depths  
of this cold lake  
where its wealth of scarcity  
invites few as residents,  
only survivors  
or the drowned.  
Still though, undrowned  
we can imagine the apposite sky  
above where we are only  
pretending to breathe in pre-pneumonic silence.

We can stare from below  
the rippling surface  
of the bluebright daylight  
as through a bottle-bottom  
shard of ancient windowglass  
from the undersurface out  
to the blue rose of receding day  
perfectly clear  
in the sanctified crackle  
to read the illuminated  
pages of the distant sun.

In the past several years, the mean Secchi disk reading has been about 24 feet, or almost twice the mean reading from the mid 80s. We do experience oddities. In 2013, if I read the graph correctly, abnormal algae growth sent reading plummeting to a low of 8.5 to 9 feet, and no one, including the DNR, can explain just why this happened. Readings in 2000 and 2001 were so clear as to provoke the curiosity of the Pollution Control Agency. We could only respond that the readings were an anomaly, as were readings from, I think, 2010, some of which went to well below 40 feet (but, having run out of line at 42 feet, I don't know by how much).

So we can relax, yes? I don't suppose that we will return to the habits of over-fertilizing the lake. On the other hand, we do want to continue paying attention to our behavior with regard to shorelines and matters of drainage into the lake from areas exposed to erosion. And we are aware that invasive species remain a threat to the lake and to our enjoyment of it (to say nothing of some matters of safety).

We have to understand that our best efforts are only our best efforts. The people who declare that our efforts are doomed to failure and that the problems we try to avoid are inevitable are probably correct. But just as probably not. We pay attention and we act with appropriate knowledge and appropriate humility, and we behave on behalf of a future that our descendants will enjoy in our memory:



## Badlands

It is because the lake is so clear this summer.

The bottom disappears.

Disappears?

A cloud bank covers the only blue left for a while.

Then just under the deception of glitter,  
surface ripples like knapped sky, flint-deep.

The lake deepens to dark charcoal.

Ancient lava flowing under the surface.

Still and hard below.

Malpais.

The disparate translucencies of lake a mile above the pillow  
of set lava balanced precarious above the igneous flow

that stood still for the creation of the first

minuscule death—the comedy

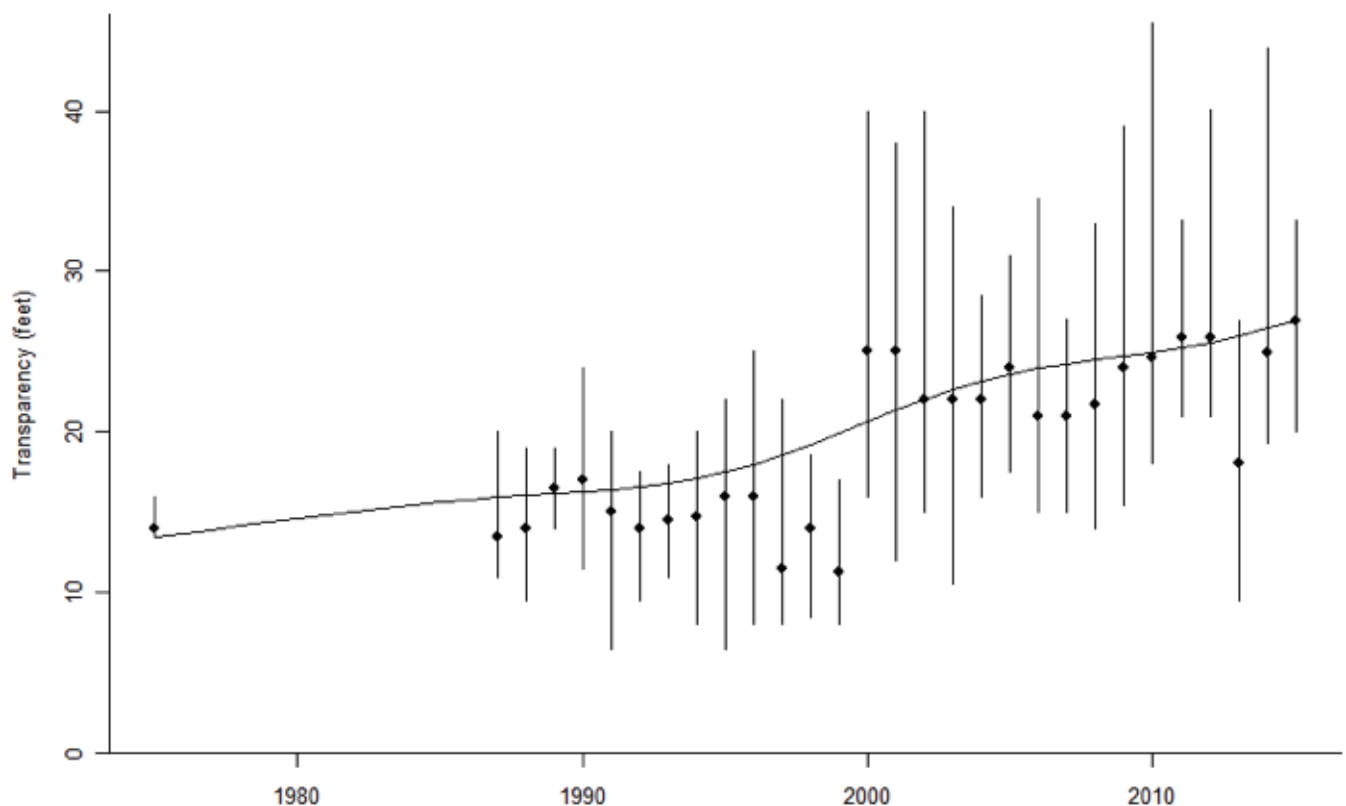
that dies still after aeons of learning.

A Folsom point. Obsidian lens.\*

\*Poems from Selenity Book Four, available at your friendly local Amazon site.

### Appendix: **Big Sand Lake Transparency Trend**

The median transparency at this lake from 1975 to 2015 increased by 4.18 feet per decade. Given the variability over these years, this is strong evidence for a long-term trend. A plausible range for the long-term trend is an increase of between 2.66 and 5.20 feet per decade.



Source: Minnesota Pollution Control Agency

# MINNESOTA FISHING LICENSE PROPOSED INCREASE

By Tim Fischbach

As the state legislators work to finalize the state's budget, Governor Dayton is proposing to raise the resident fishing license from \$22 to \$25, starting in 2018. The proposed budgets from the MN House and MN Senate do not have an increase in their proposals. More to come as the debate will begin soon. The last increase in fishing licenses was 2011.

If new fees are approved (state park visitors, deer hunter, ATV drivers, boaters, etc.), the DNR's budget would increase by \$76 million, or 8% to \$1.07 billion in overall spending for the 2018-2019 biennial period. Of that increase, \$36.8 million would come from the various user fees.

Less than 1% of the DNR's operating budget comes from the state's general fund. Legacy Funds contribute \$72 million every two years and another large amount comes from the federal excise tax on hunting and fishing gear.

The DNR said 13% of the agency's request is for new investments, \$5 million for reforestation on state lands, \$4 million for a new computer system for forestry management and \$2 million for new technology upgrades at our state parks.

The biggest DNR fund heading for a deficit is the Game and Fish Fund, the primary fund that pays for fish and wildlife management.

Its year end fund balance is projected to fall into the red in fiscal 2019, down from the \$20 million positive fund balance at the end of fiscal 2016.

Already the DNR is delaying or canceling habitat and research projects, reducing fish stocking efforts and ordering fewer biological surveys and assessments to slow the spiral.

A slight increase in user fees, across the board, seems logical to support the good work our DNR does on a daily basis. Paying another \$3 to fish in our Minnesota lakes will not hurt anyone - let's give our governor our support.



## BIG SAND NOTES

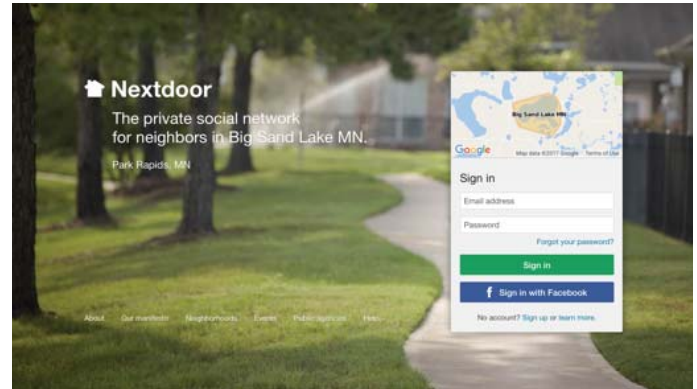
Doug Kinsley, Park Rapids DNR (per phone)

- Spawn take from white Suckers will take place in the next week.
- Tullibee population contains lots of young fish, not as many adults compared to previous years
- Gill net sampling is scheduled for the last week of July on Big Sand.
- Rock Bass population is the highest since keeping records, not sure the solution to reduce.

# IN THE KNOW SIGN UP FOR NEXTDOOR BIG SAND

Nextdoor Neighborhood is a secure email list restricted to people who live on or near Big Sand Lake.

This is a convenient way to share information relevant to Big Sand neighbors — news of social events, lost and found, gently used lake items for sale or wanted to buy, etc. Approximately 100 Big Sanders are currently signed up. To sign up to nextdoor.com, enter your Big Sand address and follow the prompts.



## ICE OUT ~ 2017!!!

Friday, April 7th at 4:00 PM Big Sand Lake was declared to be ice out by our impartial canoe judge!

Thank you to everyone that participated and kept an eye on the ice this year!

The winner is Tom Kimer with a guess of April 10th at 2:00 PM!!!

Bruce Heyse came close with a guess of April 10th at 2:32 PM!!!

*Webcam shot of the ice on April 4th @ 6:58 PM*



P.O. Box 181, Park Rapids, MN 56470

## 2016 BSLA BOARD OF DIRECTORS

### OFFICIERS

#### Co-Presidents :

Barb Kimer (2016-2017) [barbkimer@gmail.com](mailto:barbkimer@gmail.com)

Catharine Williamson (2016-2017)  
[spiritw@me.com](mailto:spiritw@me.com)

#### Vice President:

Irene Weis (2016-2017)  
[ilweis@arvig.net](mailto:ilweis@arvig.net)

#### Secretary:

OPEN

#### Treasurer:

Al Judson (2016-2017) [joal1969@gmail.com](mailto:joal1969@gmail.com)

### DIRECTORS

Bonnie Brand (2014-2017)  
[bjbrand@info-link.net](mailto:bjbrand@info-link.net)

Bill Eichten (2014-2017) [weicht-en@aol.com](mailto:weicht-en@aol.com)

Ellis Jones (2014-2017) [erjones3@gmail.com](mailto:erjones3@gmail.com)

Beth Kreuger (2014-2017) [wkreuger@paulbunyan.net](mailto:wkreuger@paulbunyan.net)

Scott Preusse (2014-2017) [slpreusse@yahoo.com](mailto:slpreusse@yahoo.com)

Steve Quaday (2016-2019) [squaday@gmail.com](mailto:squaday@gmail.com)

Aaron Roseth (2014-2017)  
[aaron.roseth@esgarch.com](mailto:aaron.roseth@esgarch.com)

Tom VanBruggen (2014-2017)  
[tvbmd50@gmail.com](mailto:tvbmd50@gmail.com)

### BIG SAND LAKE CHARITABLE FUND CO-CHAIRS

Chris Hilger [chris.hilger@yahoo.com](mailto:chris.hilger@yahoo.com)

Ann Hilger  
[hilger728@yahoo.com](mailto:hilger728@yahoo.com)

### COMMITTEE CHAIRS

#### Social Activities

Beth Kreuger, [wkreuger@paulbunyan.net](mailto:wkreuger@paulbunyan.net)

#### Newsletter Editor

Cindy Rehkamp, [rehkamp4879@msn.com](mailto:rehkamp4879@msn.com)

#### COLA Representative

Irene Weis, [ilweis@arvig.net](mailto:ilweis@arvig.net)

#### Lake Management Plan Coordinator

Sue Fairchild Winn, [winns01@yahoo.com](mailto:winns01@yahoo.com)

#### Facebook Coordinator

Heather Wittman, [hhayden2@gmail.com](mailto:hhayden2@gmail.com)

### Website Coordinator

Barb Kimer, [barbkimer@gmail.com](mailto:barbkimer@gmail.com)

### History Project

Betsy Crabtree, [bcrabt541@aol.com](mailto:bcrabt541@aol.com)

### Resident Directory

Tara Schell, [t.schell@comcast.net](mailto:t.schell@comcast.net)

### Calling Tree Coordinator

OPEN

### LMP FACILITATORS

#### Fisheries:

Tim Fischbach, [dtfischbach@gmail.com](mailto:dtfischbach@gmail.com)

#### Invasive Species:

Richard Sederstrom, [richard\\_sederstrom@q.com](mailto:richard_sederstrom@q.com)

### Organizational Development / Communication:

Karen Nelson, [bslanews@yahoo.com](mailto:bslanews@yahoo.com)

### Public Water Access

Carol Zimmerman, [allancarolzim@cable-one.net](mailto:allancarolzim@cable-one.net)

### Shoreland Education /

#### Aquatic Vegetation:

Jo Judson, [joal1969@gmail.com](mailto:joal1969@gmail.com)

### Wildlife / Environment:

Terry Klepinski, [t.klepinski@gmail.com](mailto:t.klepinski@gmail.com)

# BIG SAND LAKE ASSOCIATION ANNUAL MEMBERSHIP Mail-In Form

To renew/join online with a credit card/Paypal, go to [www.bigsandlake.org](http://www.bigsandlake.org); (discard this form if renewing on line)

Annual Dues submitted for Membership Year 20\_\_\_\_ TODAY'S DATE\_\_\_\_/\_\_\_\_/\_\_\_\_  
(day) (Month) (year)

MEMBER NAME\_\_\_\_\_

\_\_\_\_Renewing Member (\$40) \_\_\_\_New Member(\$40) \_\_\_\_ Adult Family Member/Friend (\$20)

## CONTACT INFORMATION FOR BSLA USE ONLY (Please complete all information below)

Big Sand Lake Address:

Home Address (if different than lake address)

House # and Road: \_\_\_\_\_

Street: \_\_\_\_\_

P.O. Box# \_\_\_\_\_ if mail is delivered there

State: \_\_\_\_\_ Zip: \_\_\_\_\_

Phone: \_\_\_\_\_

Phone: \_\_\_\_\_

Cell Phone(s): \_\_\_\_\_

**Primary Contact Email Address**—Note: this email address is what you will use to Login to the Members Only Area on the website: (Please print clearly):

Additional Family Names / email addresses for BSLA directory: (optional)

## INFORMATION FOR BSLA MAILINGS

Between **May and September** please send mail \_\_\_\_\_ to Big Sand address, or \_\_\_\_\_ to home address

Between **October – May** please send mail \_\_\_\_\_ to Big Sand address, or \_\_\_\_\_ to home address

\_\_\_\_\_ I prefer receiving Big Sand communications via email

## MEMBERSHIP DUES AND DONATIONS

\$\_\_\_\_\_ Annual Resident Membership Dues (\$40 /year)

\$\_\_\_\_\_ Adult Family Member/Friend Dues \$20/year (available to non-property owners only)

\$\_\_\_\_\_ Donation to BSLA Treasury (optional)\* to support additional operational expenses such as: website/webcams, lake maintenance (water testing, buoys), communications and events

\$\_\_\_\_\_ Total Enclosed — Make Checks Payable to: BSLA (a 501c3 tax-deductible organization)

**\*AIS Boat Inspection Donations** —Do not enclose AIS donation with payment to BSLA. Send AIS donations to the Big Sand Lake Charitable Fund. Make checks payable to Big Sand Lake Charitable Fund — please note in memo field "AIS Boat Inspections". Mail to NWMF 201 3rd Street, NW, Bemidji MN 56601

To donate online, click the 'Donate Now' button in the right hand column. In the 'Additional Information' section at the end of the form, please indicate "Project Fund" and write "AIS-Boat Inspections" in the 'Question or Comment' box.

*Thank you for supporting BSLA!*

\_\_\_\_\_ \*My name may be listed as a donor \_\_\_\_\_ \*please keep my donations anonymous \_\_\_\_\_

\_\_\_\_\_ I am interested in BSLA volunteer opportunities, please contact me (see list on reverse side)

Comments/Additional Information:



## Big Sand Lake Association Volunteer Opportunities

For more information about estimated time requirements and expectations contact us at info@bigsandlake.org

Your Name \_\_\_\_\_ Phone \_\_\_\_\_

Email address \_\_\_\_\_

I am willing to: (please mark all areas of interest)

- \_\_\_\_\_ Serve on BSLA Board of Directors – 3-year terms, 4-6 meetings April-October; email communication during the off season
- \_\_\_\_\_ Serve as Website Coordinator – keep website up to date/compose informational articles coordinate with webmaster for postings — requires minimal technical knowledge
- \_\_\_\_\_ Serve as Newsletter Editor – solicit and organize articles/send to layout person/coordinate with Haas Printing — newsletter published 3-4 times/year
- \_\_\_\_\_ Serve on the Social Committee—plan BSLA events and activities
- \_\_\_\_\_ Host a Social – pot-luck events at your lake home with supplies donated by BSLA
- \_\_\_\_\_ Plan and Coordinate Annual Meeting Amenities – one time event
- \_\_\_\_\_ Serve on Membership Committee – assist with membership recruiting and communication
- \_\_\_\_\_ Serve on the Calling Tree—contact neighbors to inform them of BSLA activities and events
- \_\_\_\_\_ Coordinate Calling Tree – recruit calling tree volunteers; send alerts/notifications to callers
- \_\_\_\_\_ Serve on the History Project Committee – assist with collecting, publishing Big Sand history
- \_\_\_\_\_ Participate in Water Quality Monitoring — collect /send in water samples 2x per summer month
- \_\_\_\_\_ Serve as a Lake Management Plan Focus Area Facilitator – recruit committee members to study/share information relating to focus area topic coordinate activities of committee
- \_\_\_\_\_ Serve on a Lake Management Plan Focus Area Committee — See Focus Areas Listed Below

Please mark all area(s) of interest below:

- |  |                               |
|--|-------------------------------|
| _____ Organizational Development/Communication | _____ Invasive Species        |
| _____ Water Quality                            | _____ Land Use & Zoning       |
| _____ Fisheries                                | _____ Wildlife/Environment    |
| _____ Water Surface Use / Public Access        | _____ Finance/Charitable Fund |
| _____ Shoreland Education                      |                               |

Comments / Your Idea for a way to volunteer:

***Thank you for volunteering to support BSLA***